

♥ *Mini Valentine Quilt 2026 - Step 2* ♥

By Kathleen Tracy

Materials for Step 2

You will be using your leftover scraps of assorted pink and red prints that were listed in Step 1. You should have cut 8 pink squares (1 ¼" x 1 ¼") and 8 red squares (1 ¼" x 1 ¼").

You will also need a scrap of a red print fabric (about 2 ½" square) for making a small heart applique. This is optional of course, as I know some of you do not like to do applique. You can substitute a button or a piece of red wool or felt for the applique or leave it plain.

You will use scraps (or fat quarters) of two different light print fabrics, as listed in Step 1.

1/8 yard of a pink print for borders

1/8 yard of a red print for binding

Backing fabric, 19" x 19"

Light cotton batting, 19" x 19"

Cutting

From a red scrap, cut

1 square, 2 ½" x 2 ½" for center heart applique

From a shirting or light print, cut

8 rectangles, 2" x 3 ½"

8 rectangles, 1 ¼" x 2"

From a **different** light print, cut

8 rectangles, 2" x 3 ½"

8 rectangles, 1 ¼" x 2"

From a pink print for borders, cut

2 strips, 2" x 12 ½"

2 strips, 2" x 15 ½"

From a red print for single-fold binding, cut

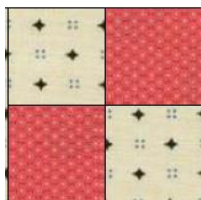
2 strips, 1 ¼" x 42"

Make the block

These are the finished four-patch units you should have already made in Step 1.



8 total



4 total



4 total

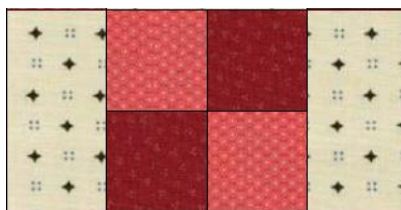


4 total

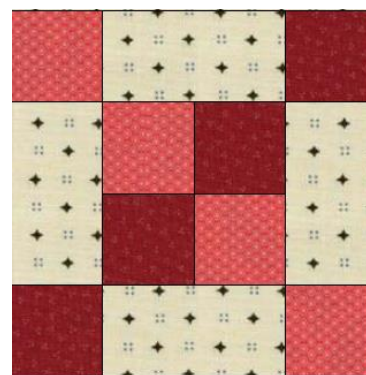
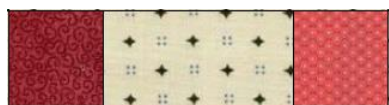
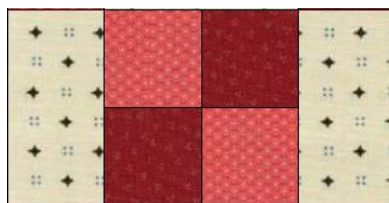
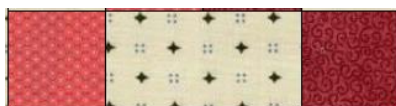
1. Sew a $1\frac{1}{4}$ " red square to one end of a $1\frac{1}{4}$ " x 2" rectangle. Sew a pink print square to the opposite end of the same rectangle. Make 4 using one light print and 4 using a different light print. Eight strips total.



2. Sew two $1\frac{1}{4}$ " x 2" rectangles to both sides of a pink and red four-patch unit.

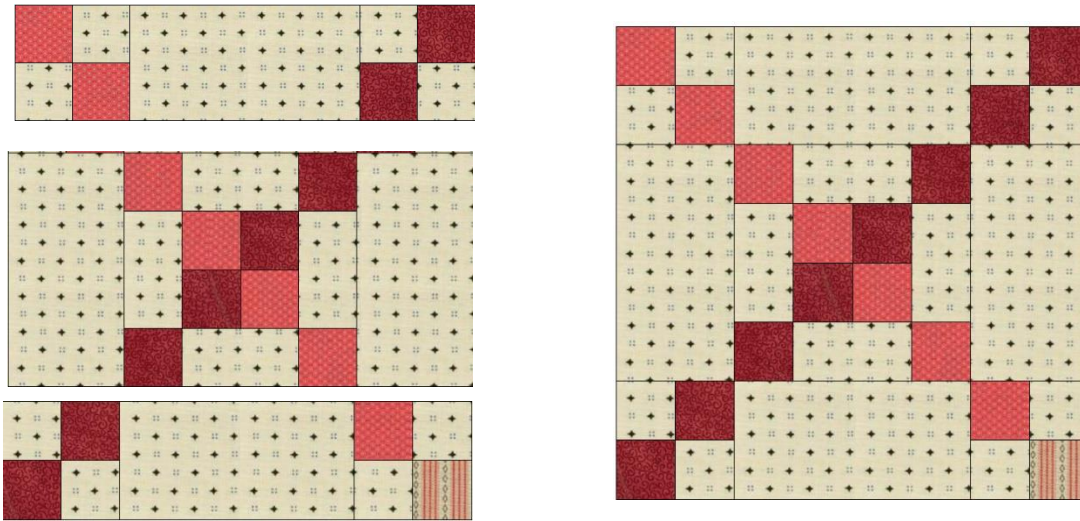


3. Sew the units from step 2 and step 3 together as shown. Trim to 4" x 4".



Make 2 blocks using one light print background and 2 blocks using a different light print background. **Four total.**

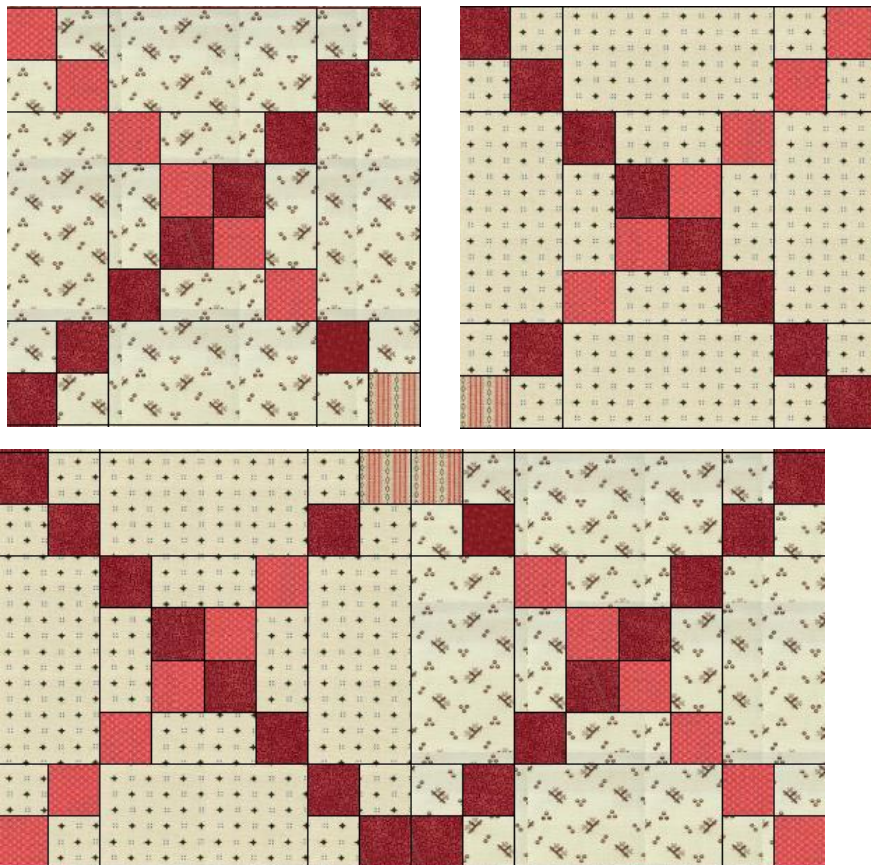
- Sew the block from step 3, above, together with the four-patch units and the 2" x 3 1/2" rectangles, making sure to arrange the red and pink squares exactly as shown. Trim to 6 1/2" x 6 1/2" **Make four Irish Chain blocks**, using two different light background prints.



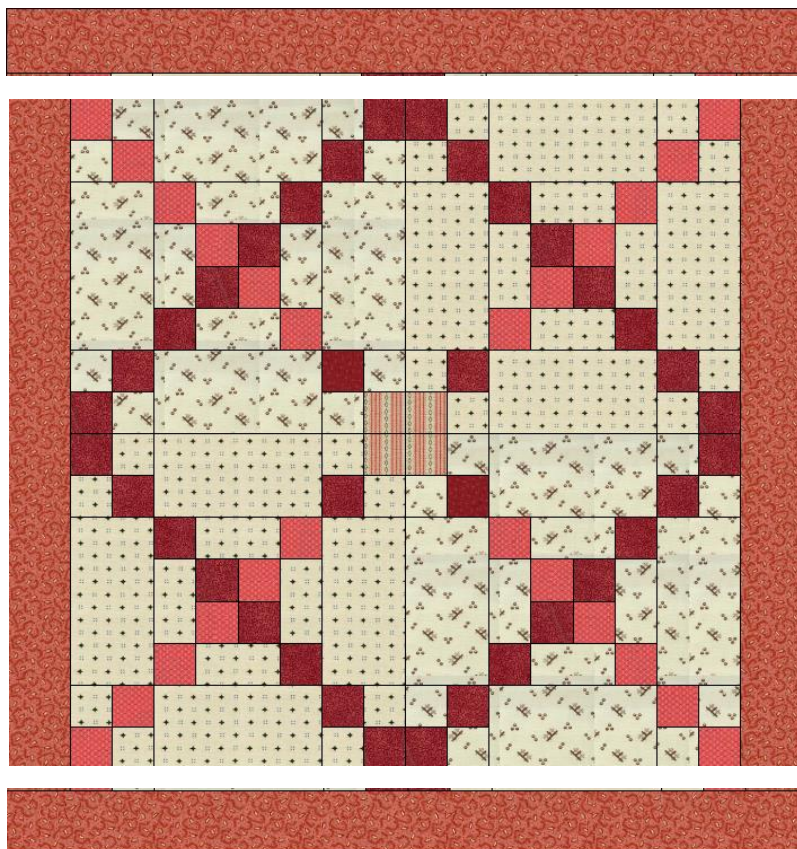
Make 4 Irish Chain blocks, using two different background prints for a scrappy look

Assemble the quilt

- Sew the blocks together into two rows exactly as shown below, rotating the blocks so the light pink squares meet in the center. Sew the rows together and press. The quilt should measure 12 1/2" square.

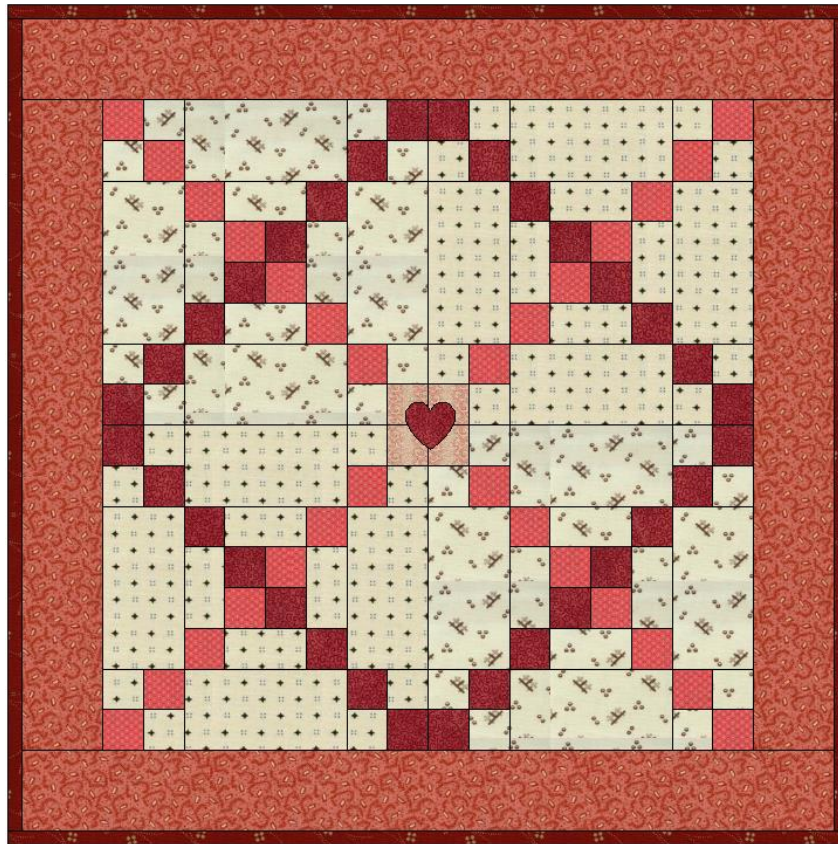


2. Sew the pink 2" x 12 ½" strips to the sides of the quilt. Sew the 2" x 15 ½" strips to the top and bottom of the quilt.



♥ *Mini Valentine Chain Quilt* ♥

Finished quilt: 15" x 15" Finished block: 6" x 6"



Applique a small heart in the center if desired, tracing the template below.

Layer the quilt top, batting and backing and quilt as you wish. Add the 1 ¼" red print strips using a single-fold binding.

